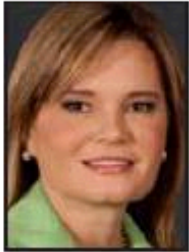


The Miami Herald

REAL ESTATE



JUNCADELLA

Maria Juncadella has been named president of Commercial Real Estate Women. She is principal of Fairchild Partners, a boutique commercial real estate firm in Coral Gables. She also will be responsible for the launch of Inspiring Innovation, a regional education campaign to encourage commercial real estate professionals to tap into new technologies and embrace social media platforms for new business opportunities and professional relationships. In addition to Juncadella, CREW-Miami's new board of directors include Margaret Nee of Pointe Group Advisors as president-elect; Terri K. Echarte of Atlantic | Pacific Companies as secretary; Sonia Cabello of Ortega Construction as treasurer; and Suzanne Amaducci-Adams of Bilzin Sumberg Baena & Price as legal counsel.